

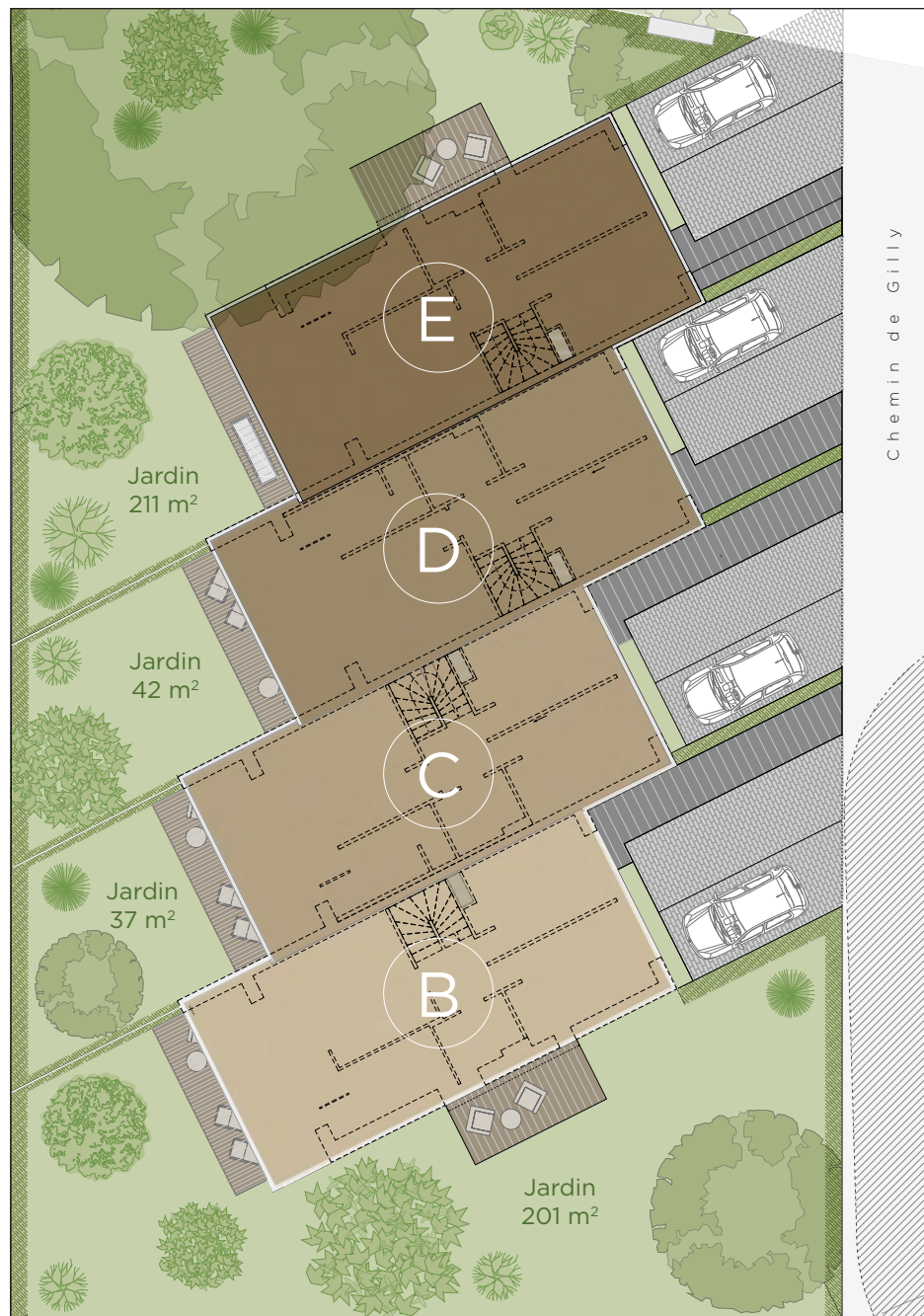
Implantation

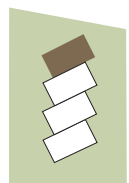
Villa E
Surface parcelle
359 m²
Surface brute de plancher
143 m²

Villa C
Surface parcelle
194 m²
Surface brute de plancher
136 m²

Villa D
Surface parcelle
191 m²
Surface brute de plancher
136 m²

Villa B
Surface parcelle
414 m²
Surface brute de plancher
143 m²





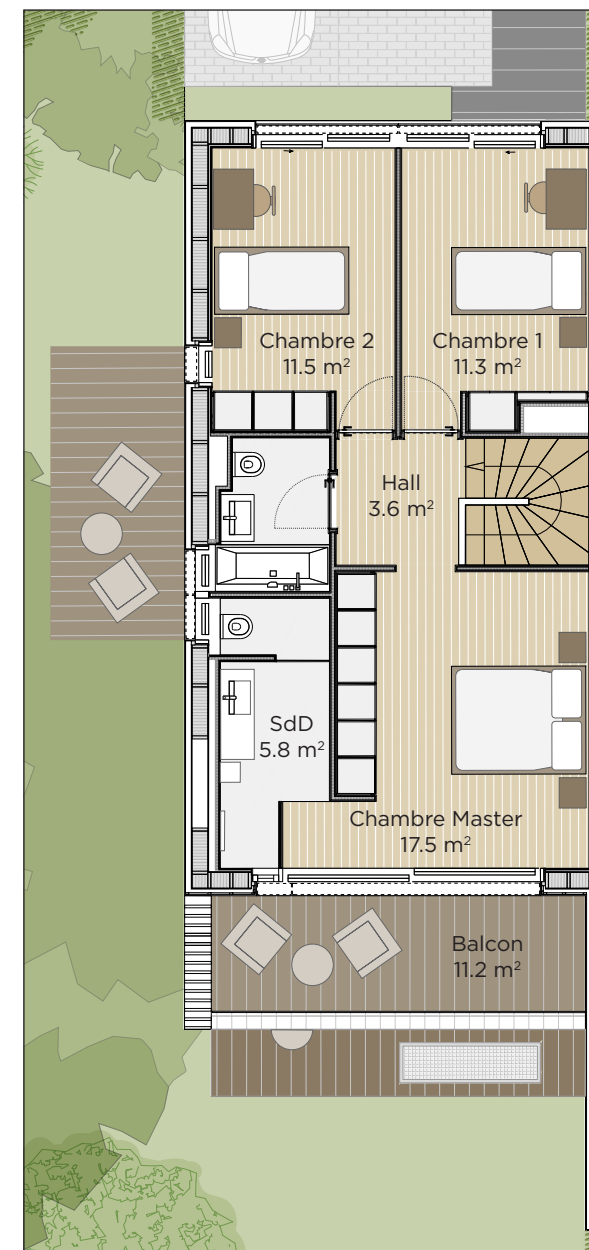
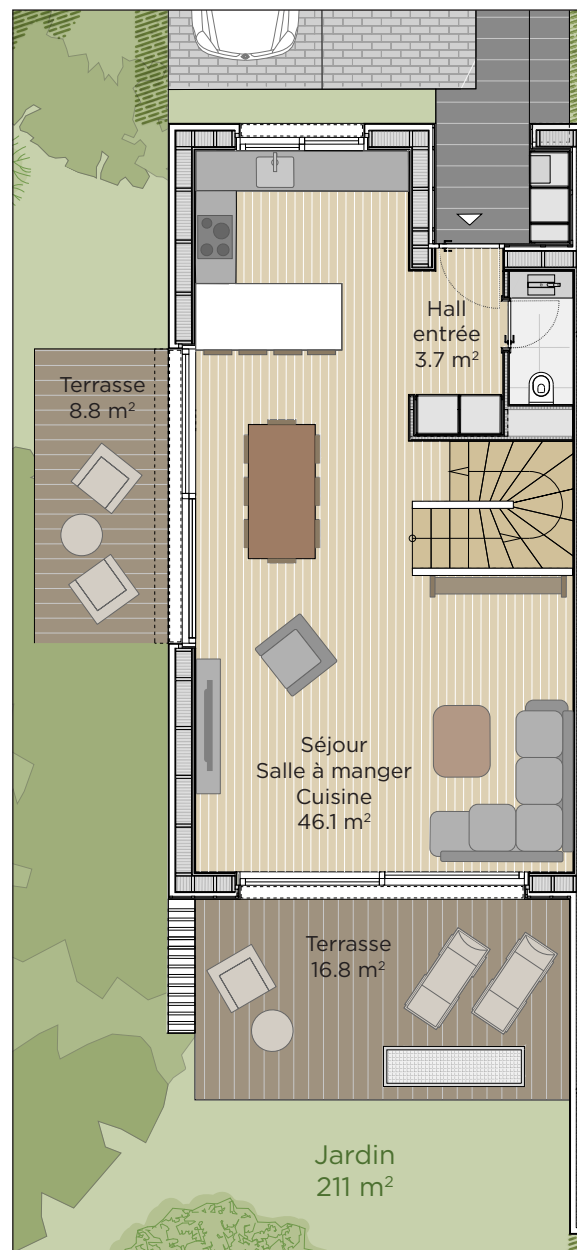
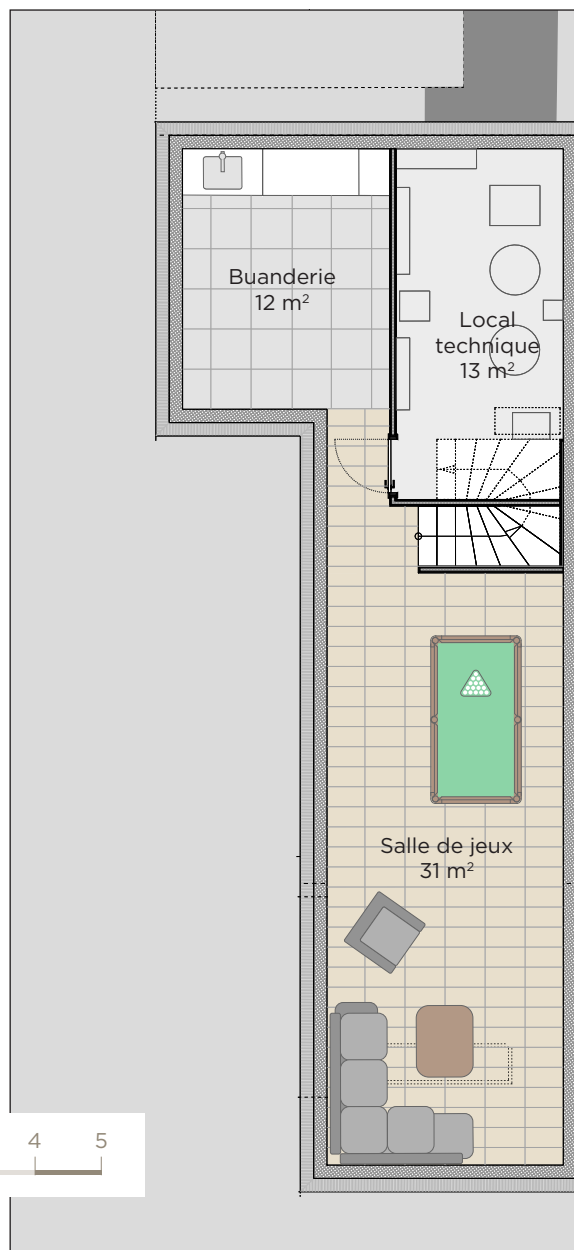
Villa E

3 chambres

Surface utile
210 m²



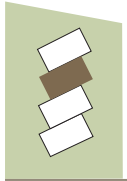
Les plans des sous-sols
sont sous réserve
d'autorisation
complémentaire.



SOUS-SOL

REZ

ÉTAGE



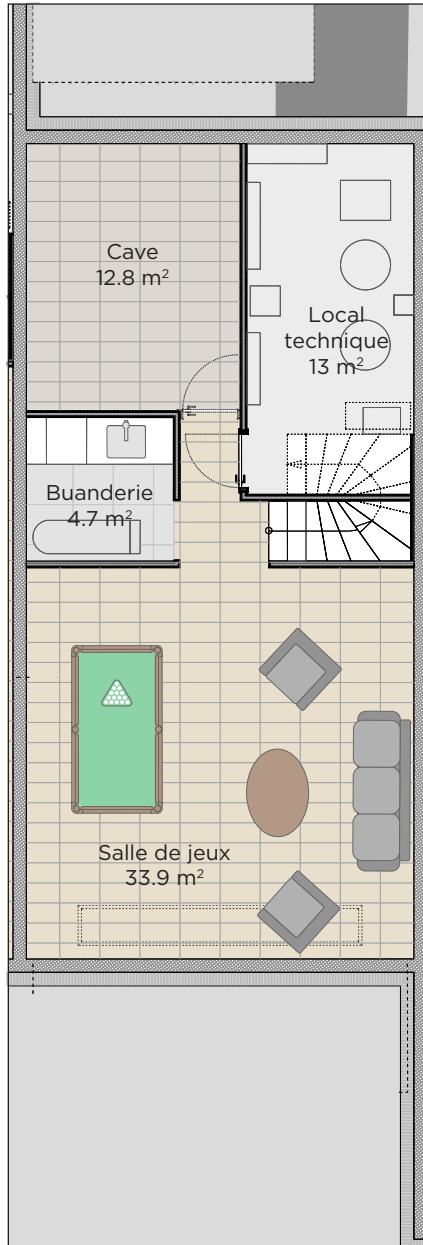
Villa D

3 chambres

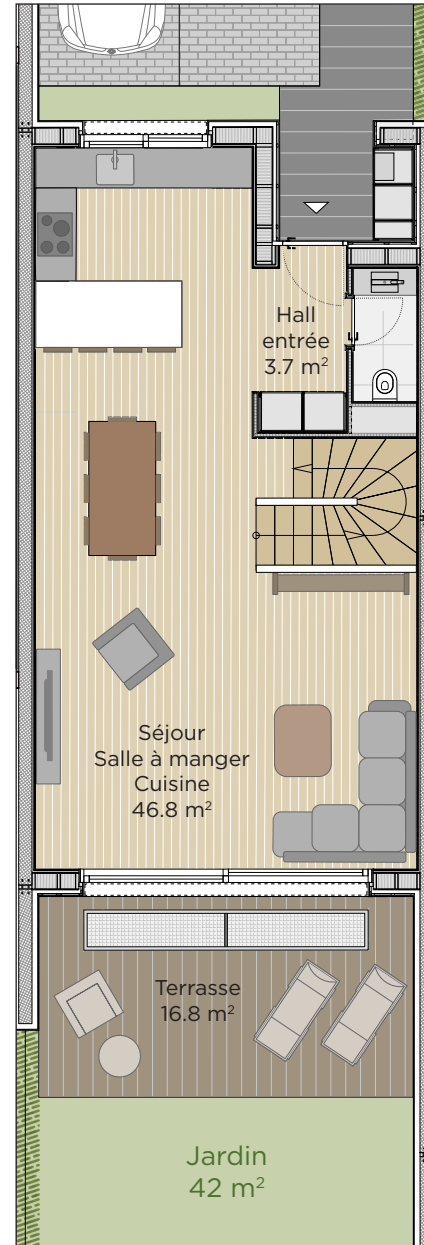
Surface utile
208 m²



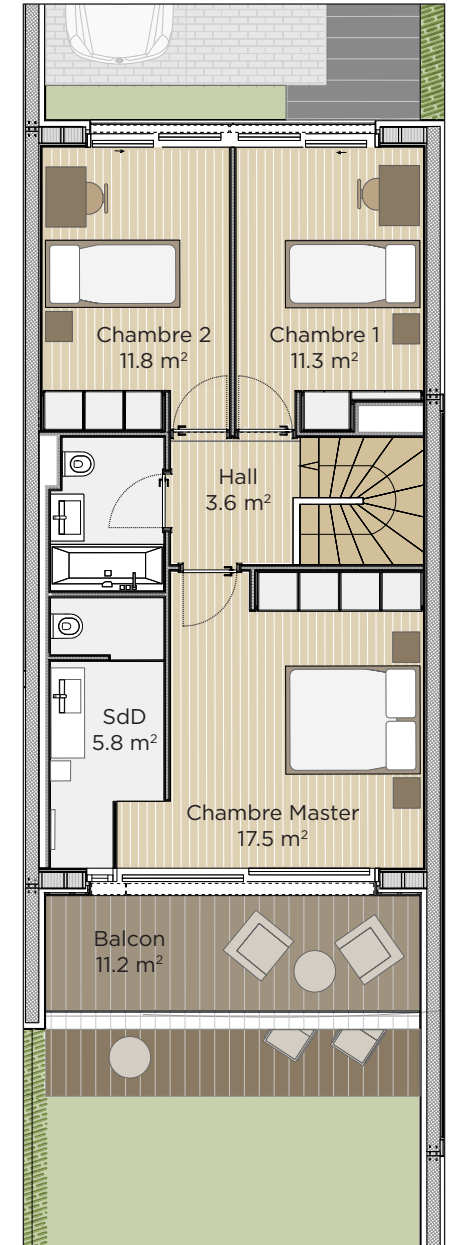
Les plans des sous-sols
sont sous réserve
d'autorisation
complémentaire.



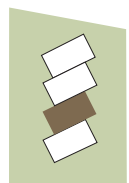
SOUS-SOL



REZ



ÉTAGE



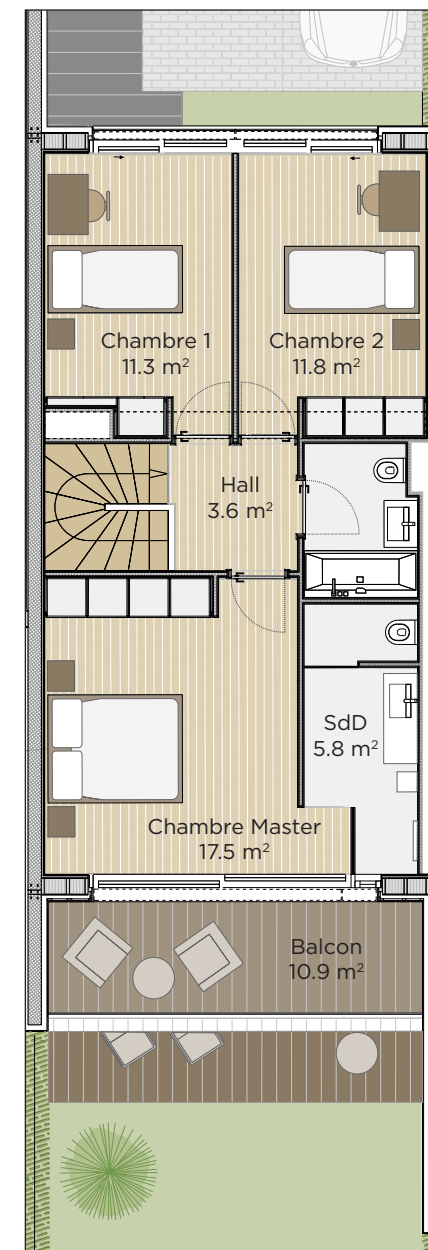
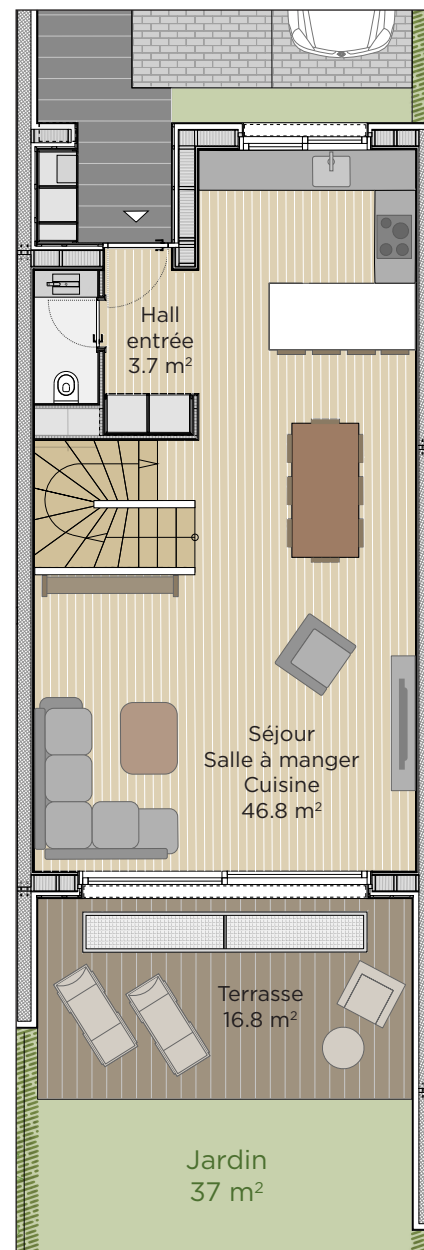
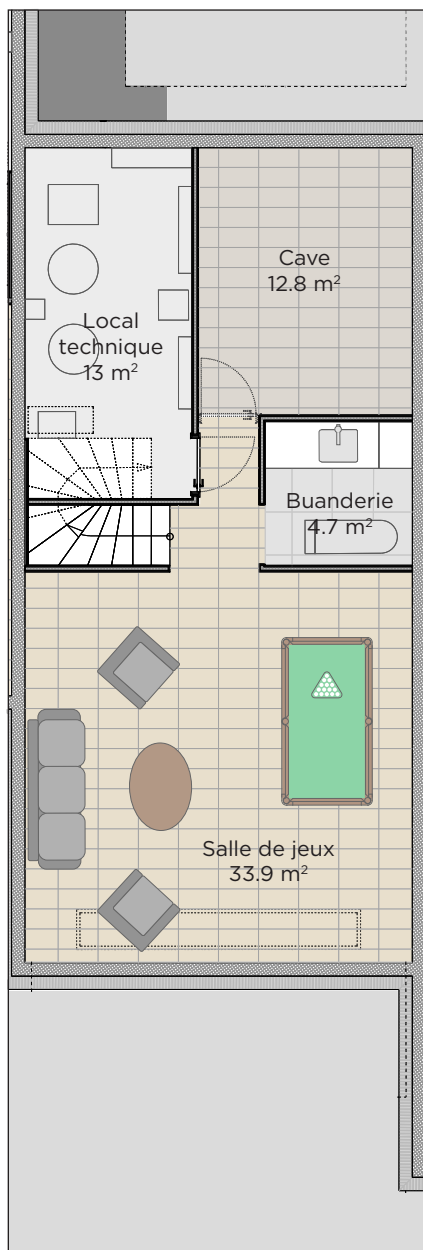
Villa C

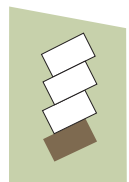
3 chambres

Surface utile
208 m²



Les plans des sous-sols
sont sous réserve
d'autorisation
complémentaire.

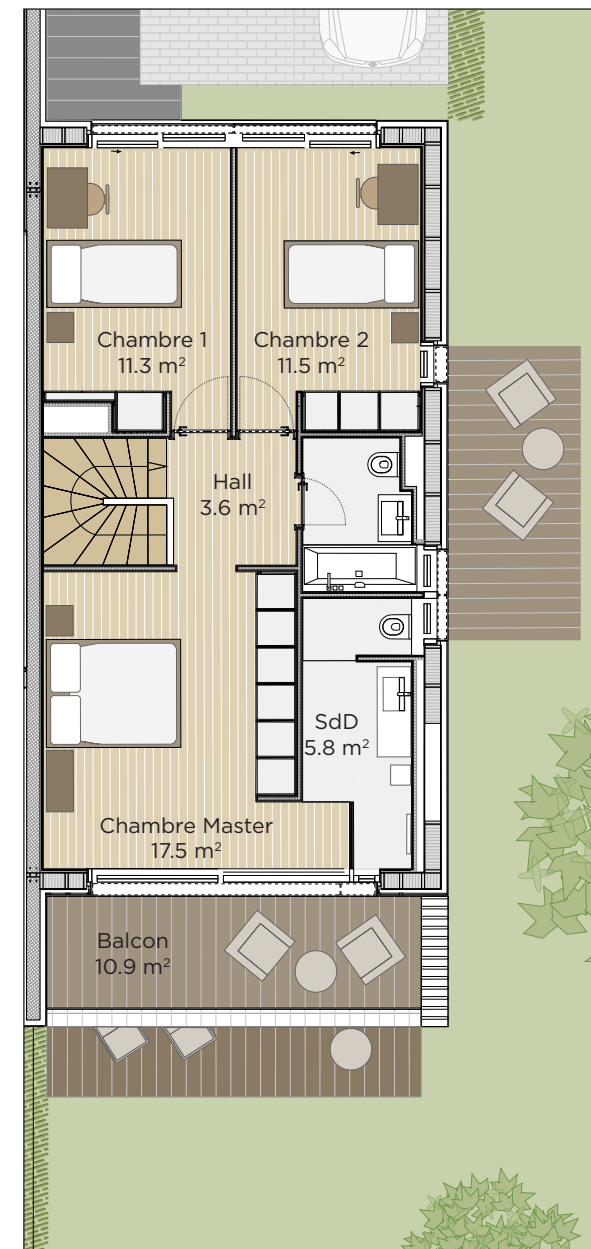
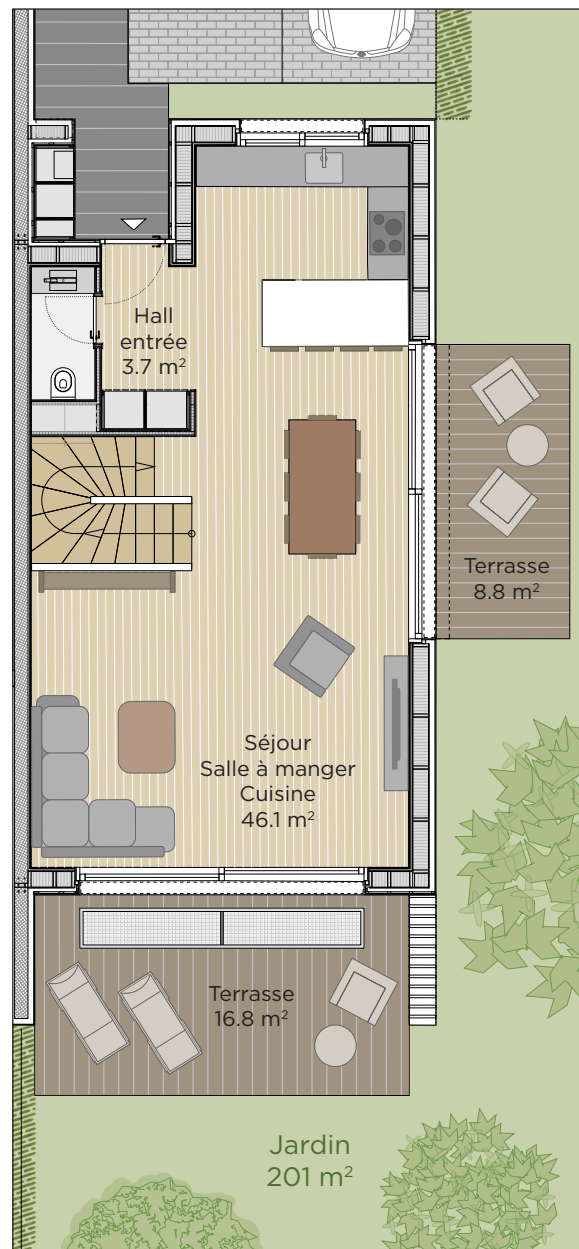
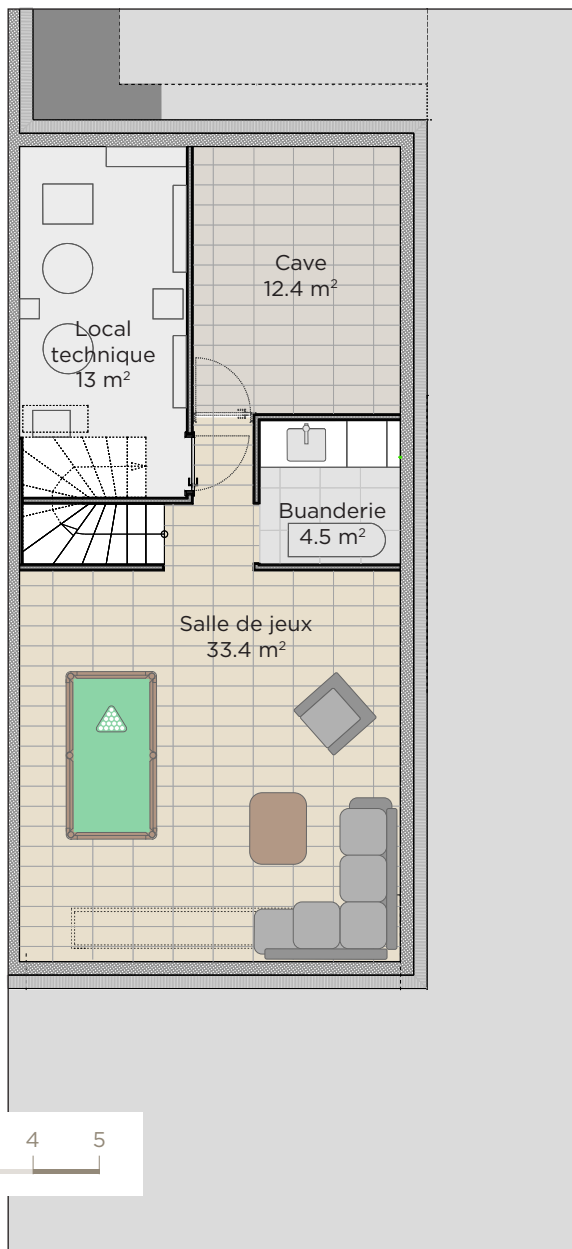




Villa B

3 chambres

Surface utile
212 m²



Les plans des sous-sols
sont sous réserve
d'autorisation
complémentaire.

SOUS-SOL

REZ

ÉTAGE